

COMMUNITY DEVELOPMENT NEWSLETTER 2021

We are slowly merging out of our third lockdown; however, this will not stop us from thinking creatively about how we can still reach out to the communities and still deliver such vital work through this pandemic. We are working in partnership with The Rank Foundation to reach out to minority ethnic groups and research what we can do to support this area of work. We have a new project 'Community in Action' which will be led by our Time to Shine Leader. We have a third-year student placement to support our delivery of work from DMU and a project manager to link in the business members with the community to ensure the vision is delivered. This is an exciting time but also a challenging one but again through sheer determination and working together anything is possible.

At Leicestershire Cares the Community Development Team decided to spread a little hope and cheer in these difficult times, by running a 'bags of hope' campaign to our old and new community partners to reach out to more of the ones that have been left behind.

Leicestershire Cares Easter #Bagsofhope 'Eggstravaganza'





We're inviting you to take part in our #Bagsofhope campaign

We are excited to announce 'Bags of hope' 2021 aimed at giving children a gift at Easter. With many community venues closed and schools not yet open, children are feeling isolated from friends, have difficulties schooling at home and taking on the pressures felt by their families. Their mental health and well-being have deteriorated and we think our #bagsofhope can raise a smile!

Who can participate

Our business members, partners, support groups and the public are all welcome to join us in donating items and funds. We know that you are keen to connect with and support great organisations in your local areas and we are excited to help you do that through this campaign.





What does it involve

Why not buy a spare chocolate egg, Easter crafts or activity kit on your next shopping trip? Items such as a yo-yo, ball, make an Easter basket, skipping rope, felt-tips, colouring book, writing pad or journal are all ideas which can make up a £10 bag. You may also donate through our Virgin Giving 'Bags of Hope' page where we can top-up bags or create even more!

For more information contact us

Email the Community Development Team on communitydevelopment@leicestershirecares.co.uk
or contact Neetu Squire, Head of Community Development on Neetu@leicestershirecares.co.uk 07834181041

Final collections and distribution of our 'Bags of Hope' will take place between March 22nd and April 1st 2021



www.virginmoneygiving.com/fund/Bagsofhope

Working in the Braunstone area, specifically at the Braunstone Civic Centre to deliver our 'together we care' bags. And Councillor Melissa March providing bags to distribute to her local elderly homes to bring some hope and cheer.



Partnership Working with Redcross. Leicestershire Cares donated bags of women, and children's clothing, toys and books. RedCross also kindly donated pillows and blankets to our Aylum and Refugee participants who reside in bedsits and hostel accommodation.



We have recently recruited a volunteer from the WIRE Project which supports ex offenders, who wants to give back to the community and is currently supporting our Aylum and Refugee participants.



Because of the impact of the lockdown and children were having to be home schooled we found that many participants didn't have access to WIFI, a printer and general support. The Aylum and Refugees we work with were very alone, isolated and their mental health increased due to lack of support and facilities to enable them to continue their studies and keep on top of their work. We decided to run a Homework Club once a week to ensure they had a safe place to attend and have access to facilities and equipment they ordinarily would not have had.





A great meeting with Jo Randell who manages the New Parks Community Hub. This community centre is open 5 days a week and run's several free sessions to support disadvanatged families and children. Leicestershire Cares is excited to work in partnership with Jo to enhance the delivery of work and support to the community.



Another partnership meeting took place at St Matthews Somali Community Parents Association. We are discussing what supoort we can provide to this centre using our business members and other projects within Leicestershire Cares. This is all about cross colaboration.



Another group who run their services voluntarily in St Mathews is a all women group named Women 4 Change. These women like to inspire and instill confidence in other women, empowering them to be who they want to be and reach out when they need help. Again Leicestershire Cares will be working along side this organisation to enhance the work that they are already delivering and creating new opportunities for the community.



We also supported this group by providing a meditation taster session to a group of ladies. Moving forward we will support for these sessions to continue.

#TAKE CARE OF YOURSELF

Women 4 Change

Naftaada daryeel

Xaggee: Online Zoom
Goorma : Sabtida 6 March 2021
Waqti : 6pm - 8:30PM

- Sarah Jones - Health & Wellbeing Coordinator oo nala sameyn doonta jimicsi yar (taster session) waxey kaloo ka hadli doontaa muhimka uu leeyahay jimicsiga iyo cuntada fiican.
- Manjit Buddi - A Holistic Therapist oo nala sameyn doonta (taster session) kulan dhadhamin oo ku saabsan daaweynta guud.
- Iyo marti kale oo ka hadli doonta cudurka dhimirka.

Ka soo qayb gal wacan!

Our empty Leicestershire Cares ‘bags of hope’ have been distributed to our business members to support our communities within Leicester and Leicestershire. We cannot thank you enough as without your ongoing support for Leicestershire Cares it would not be possible to reach out to as many communities as we do.

THANK YOU!



We delivered a Stop and Search, know your rights session. Thank you to Constable Adam Ahmed for taking time to explain what this means to our Aylum and Refugee participants. It was a real eye opener on the dos and dont's of the law and the implications of mindsets and attitudes towards the UK law and the police.



Thank you to the Midlands Sewa Langar for donating some food to our Leicestershire Cares participants, to ensure nobody is left behind and Hum Sath Sewa Team for delivering it to us. A new partnership that will develop and further our work in the community.

Together we are stronger!



The Community Development Team at Leicestershire Cares donated £200 to a project named 'outspoken' which deliver hot food and food parcels to the minority ethnic community that are struggling with loneliness and isolation. They also have a food bank that people can readily access. Great charity to support the work they are delivering in hard to reach areas.



In New Parks Team Hub we are setting up its very first 'baby food bank' with partnership working with Hun Sath Sewa team from Belgrave. Here we are discussing the logistics to make it happen!



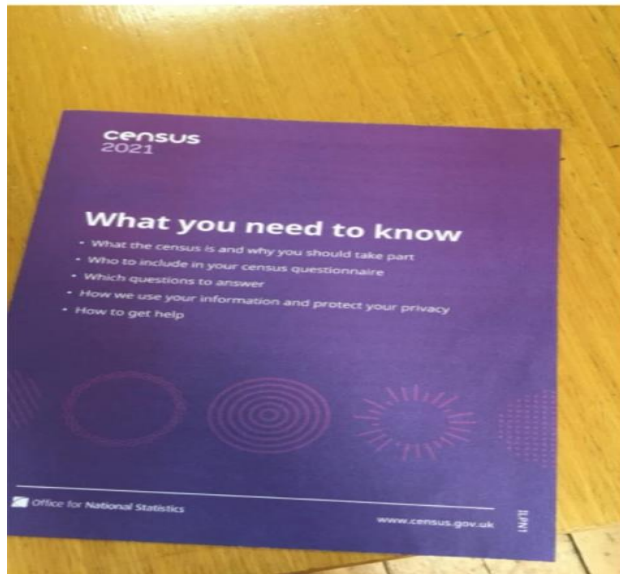
As you can see here we honour what we say and within 3 weeks we made this happen by contributing nappies, wipes, food, baby milk, and baby bibs.



Also in New Parks Team Hub we developed a new little children's library for the community in honour of world book day, and a scheme to 'reduce, reuse, recycle' books. This has been so popular we are now reaching out wider to get more mini libraries set up in other communities and get the books replenished. Thank you to our business members who have supported and donated.



Supporting our Asylum and Refugee participants with completing their census forms to have a wider understanding on why this form is so important to complete.



The Team Hub in New Parks have a high percentage of children not in education, employment or training, so at the GNR8 Academy we teamed up to see what Community Development Team could do in supporting this and funded a 6 week programme in their Boxing Academy. This programme will support up to 25 participants.



Delivering hot food to Wesley Hall food bank in Highfields/spinney hill area. 270 people queue three times a week for food here and it is a honour for the community development team to work in partnership to support this much needed community. We have also funded for the community to have weekly session via zoom on Fitness,Yoga,Mehndi,Happiness and Mindfulness with 30/40 participants taking part each week.



"I cannot thank the Community Deveopment Team for supporting Wesley Hall and the community. The impact it will have to support so many on the poverty line is greatly appreciated".

Working in collaboration with the Yes Project we delivered a mini Team Challenge outdoors to an outreach community centre for children and families to make the entrance to their door more welcoming and nicer to look at.



“it was a great day out and it felt so good to help and support another community”

In the Sikh Community there is a huge celebration each year on Visaiaki so in honour of this we distributed 100 Kheer (rice pudding) to the communities food banks and house holds who were celebrating.



The CD Team were the broker between the Somali Community and the Hindu Community to work together to deliver a food bank once a week to the community in St Matthews. To see different faith groups come together and break down any stigma and barriers was just wonderful to unite and show when we work together look what we can achieve together!

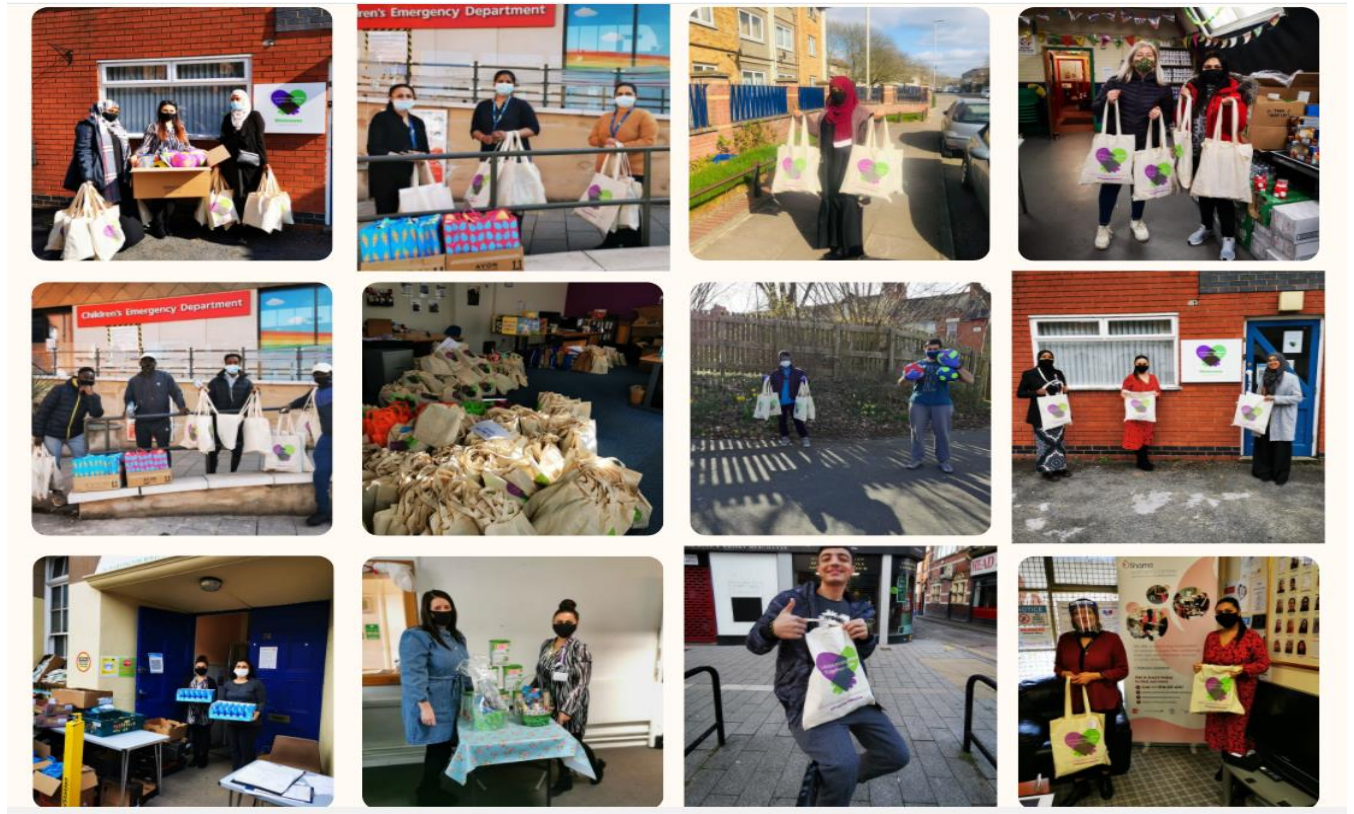


Quarantine Cooks, since last year March 2020 is still going strong. We have been continuing our zoom sessions fortnightly teaching healthy nutritional meals for £10.00 and under which LC funded by providing Aldi vouchers to our participants to enable anyone that wanted to take part could do without any barriers or restrictions to buy the ingredients and also empowering them to come up with their own ideas on what they wanted to cook taught by a professional chef.



Here is a collage of all the #bagsofhope we all worked on through Easter and in total we had **723** bags and chocolates delivered to 25 different communities in Leicester and Leicestershire. This is quite extraordinary and the impact of these bags given were very well received.

THANK YOU TO EVERYONE INVOLVED!

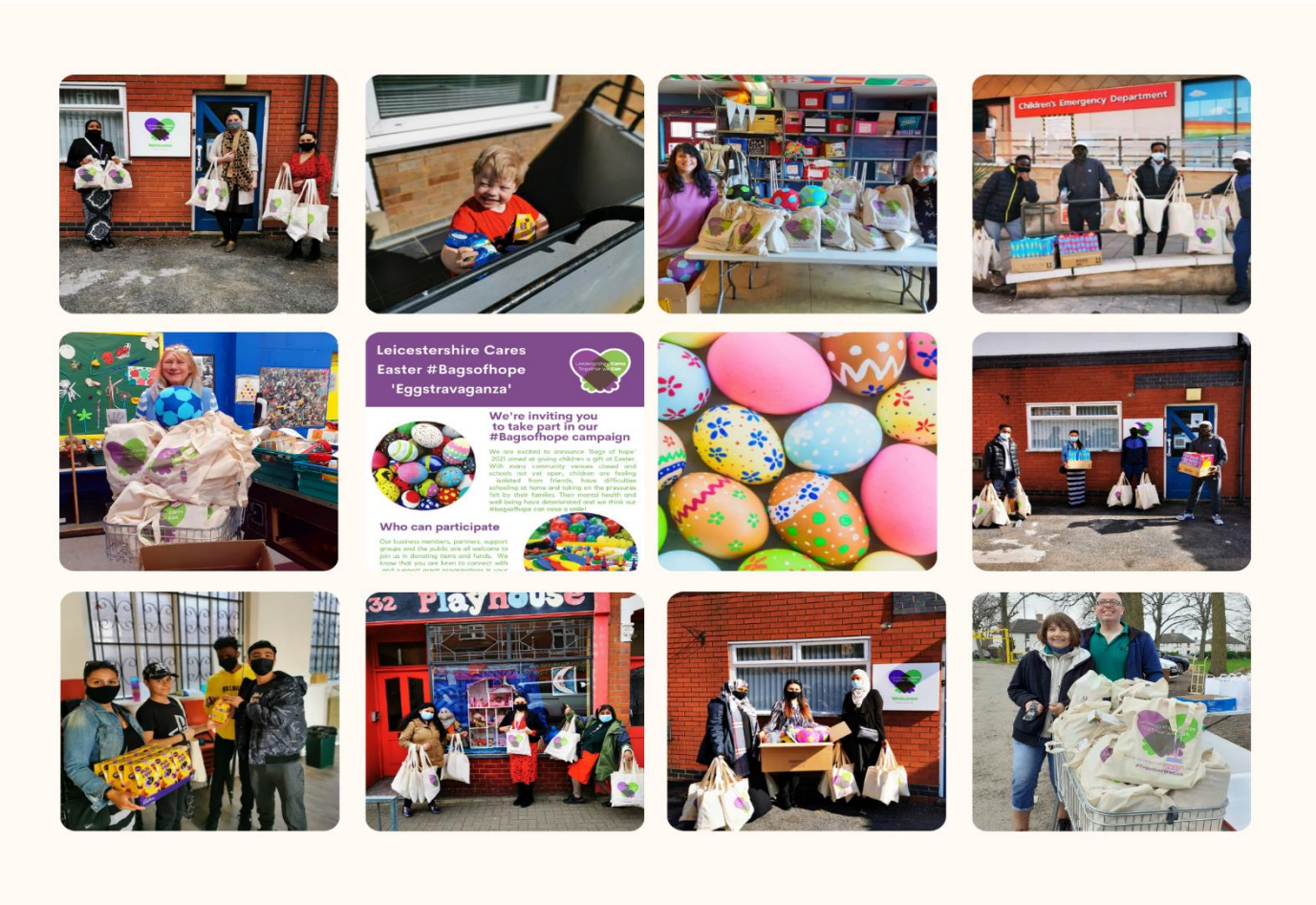


“salam sister, I just wanted to say to you thank you for the gifts. My kids absolutely loved them”.

“my 5-year-old daughter said that the bags were so lovely to receive and the ladies who delivered them were so kind”.

“thank you so much for the Easter bags, I cannot tell you how much it made my child’s day”.

“thank you for all the ‘bags of hope’ which has made such a difference to all the families and children this Easter in our communities”.



**Leicestershire Cares
Easter #Bagsofhope
'Eggstravaganza'**

We're inviting you to take part in our #Bagsofhope campaign

Who can participate

Our business members, partners, support groups and the public are all welcome to join in. It's a wonderful time to help those in need. We know that you are keen to connect with your community and we're delighted to be part of it.

If you would like to get involved or contribute to any of the Community Development work at Leicestershire Cares, please get in touch.

Email: communitydevelopment@leicestershirecares.co.uk Or
Neetu@leicestershirecares.co.uk

Office No: 0116 4645215

Mobile: 07834181041



